

## OTHER PRODUCTS

### Our U-marking heads - the classics for integration

- Pneumatic marking tool
- High impact strength through optional additional valve
- High functionality through combination with various control systems
- Particularly high marking qualities due to stable mechanics
- Oscillating marking tool for clean line markings



### DISCOVER ALSO OUR minis



#### FlyMarker® mini 85/45 *plus*

- Marking area 85 x 45 mm (x/y) (optional: 120 x 45 mm)
- Extra strong solenoid (optional)
- Very stable guiding system
- Integrated laser pointer



#### FlyMarker® mini STATION 120/100

- Marking area 120 x 100 mm (x/y)
- Capacitive touch screen (optional)
- Illuminated marking area
- Electromagnetic needle drive



**WORLDWIDE**  
**REPRESENTATIONS**  
 M A R K A T O R . C O M

MARKATOR®  
 Manfred Borries GmbH

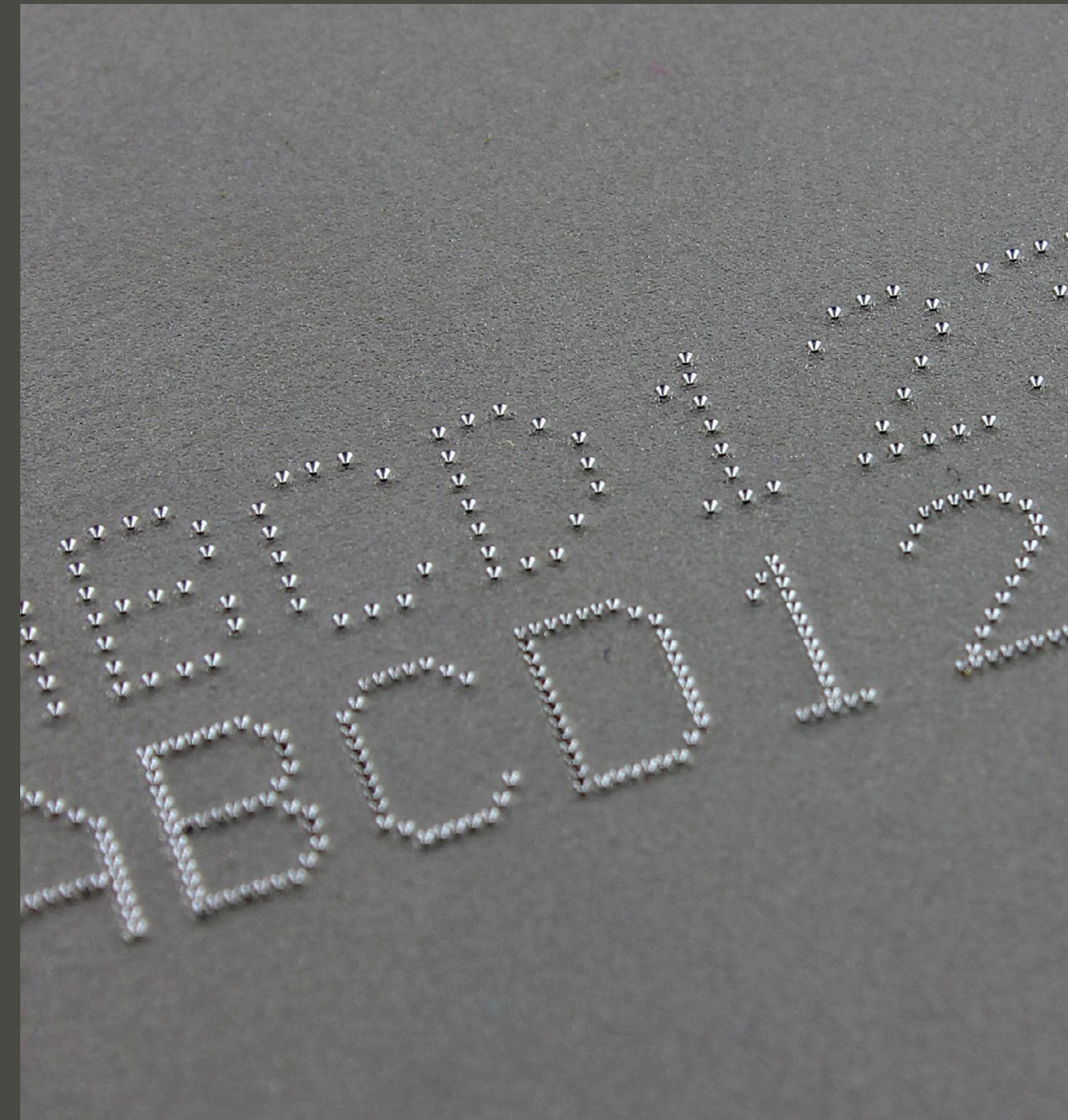
Bunsenstraße 15  
 71642 Ludwigsburg  
 Germany

Phone +49 (0) 7144 - 8575 - 0  
 Fax +49 (0) 7144 - 8575 - 600

info@markator.de  
 www.markator.de



**MARKING SYSTEM-INTEGRATION**  
**MV5 INTEGRAL**  
 DOT PEEN MARKER



Version 1.0 | All information subject to correction. Images similar. Images may contain optional accessories.







MV5 U65/30 *INTEGRAL*



MV5 U85/45 *INTEGRAL*  
(Display optional)

FUNCTIONAL

- Control unit is integrated in the marking head housing
- Very good price-performance ratio
- Large marking field with low device volume

EASY INTEGRATION

- Ideal for integration into test systems
- Space-saving installation
- Communication to PLC via function block optional
- Fast function control by 6 status LEDs on the marking head

ELECTRIC DRIVE

- Operation without compressed air with electromagnetic magnet
- Only 24 V - connection necessary
- Low operating costs



Data Matrix Code



Single point font



Line font

Can be integrated into any production

- Test facilities
- Robot applications
- Applications with low space requirements
- Mechanical Engineering
- DMC applications

Options

- Manual height adjustment  
Quick and precise adjustment of the pin distance to the material
- Pneumatic Z-axis  
Adjustment of the marking head to the component (stroke from 100mm)
- Communication cards (e.g. PROFINET)

	MV5 U65/30 <i>INTEGRAL</i>	MV5 U85/45 <i>INTEGRAL</i>	MV5 U120/45 <i>INTEGRAL</i>
Marking area (mm, x/y) *	65 x 30	85 x 45	120 x 45
Dimensions (LxWxH)	ca. 140 x 96 x 320	ca. 187 x 137 x 323	ca. 249 x 137 x 323
Weight (kg)	ca. 3,0	ca. 4,0	ca. 4,6
Character heights	From 1.0 mm continuously adjustable in 1/10 steps		
Characters	Large and small alphabet with umlauts, numbers 0 to 9, special characters		
Fonts	Dot matrix (5 x 7 and 9 x 13) similar to DIN 1451, other fonts on request		
Resolution of stepper motors	0.0125 mm for extremely high marking qualities		
Protective cover	•	•	–
Display	–	optional	
Communication cards	–	PROFINET CU/LWL, PROFIBUS, ETHERNET IP (Rockwell), other optional	
Mounting position	Independent of position, 360		



Maintenance Services

Maintenance services with extended warranty  
For 1-3 shift operation from 2 to 5 years running time



Trainings

At company MARKATOR or at the customer  
Maintenance staff  
Users and programmers



Application and programming service

Support and advice  
Error search and error correction in hardware and software  
Service via hotline



MV5-products

Phone: +49 (0) 7144/85 75 - 40  
e-mail: [service@markator.de](mailto:service@markator.de)

Spare parts / repairs

Phone: +49 (0) 7144/85 75 - 93  
e-mail: [spare-parts@markator.de](mailto:spare-parts@markator.de)

